



Tips to Support Children's Science Learning

A Garden where Scholars Bloom



Content

- **T**eaching and Learning of Science @ SLPS
- **S**tudent Learning Experiences
- **S**upporting Children's Science Learning

A Garden where Scholars Bloom



Teaching and Learning of Science

- **Three areas** to master:

Knowledge (Content)

Students need to know and understand:

- (a) Scientific facts, concepts and principles
- (b) Scientific terminology and conventions
- (c) Scientific instruments and apparatus

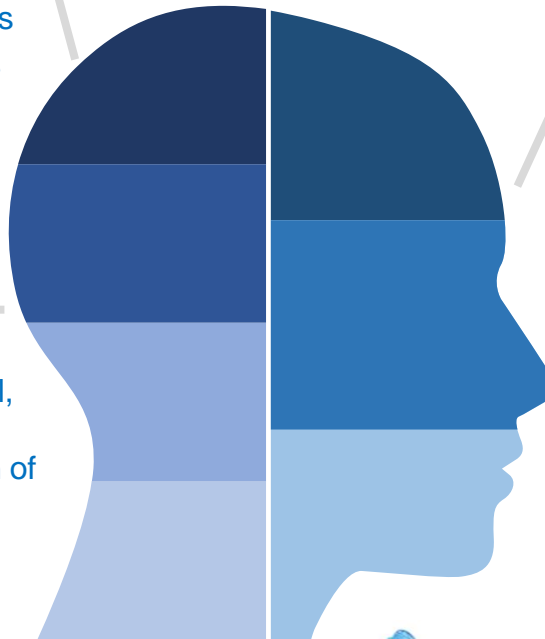
Process Skills

Students need to know how to:

- (a) Interpret information (including pictorial, tabular and graphical)
- (b) Investigate using one or a combination of process skills

Application of Knowledge and Process Skills

Students need to apply scientific facts, concepts and principles to new situations.



A Garden where Scholars Bloom



Teaching and Learning of Science

▪ An example of **Knowledge** (Content)

Knowledge (Content)

Students need to know and understand:

- (a) Scientific **facts, concepts** and principles
- (b) Scientific terminology and conventions
- (c) Scientific instruments and apparatus

One of the facts/concepts about Heat:

- What is a good conductor of heat?
- What is a poor conductor of heat?

Metals **allow** heat to flow through them easily.
They are called **good conductors** of heat.

Materials like air, plastic, rubber and wood do **not allow** heat to flow through them easily.
They are called **poor conductors** of heat.

The metal body is
a good conductor
of heat.



The plastic
handle is a poor
conductor of
heat.

2.2.4
Conductors of Heat

A Garden where Scholars Bloom



Teaching and Learning of Science

- An example of using **Process Skills to interpret**

Interpreting information:

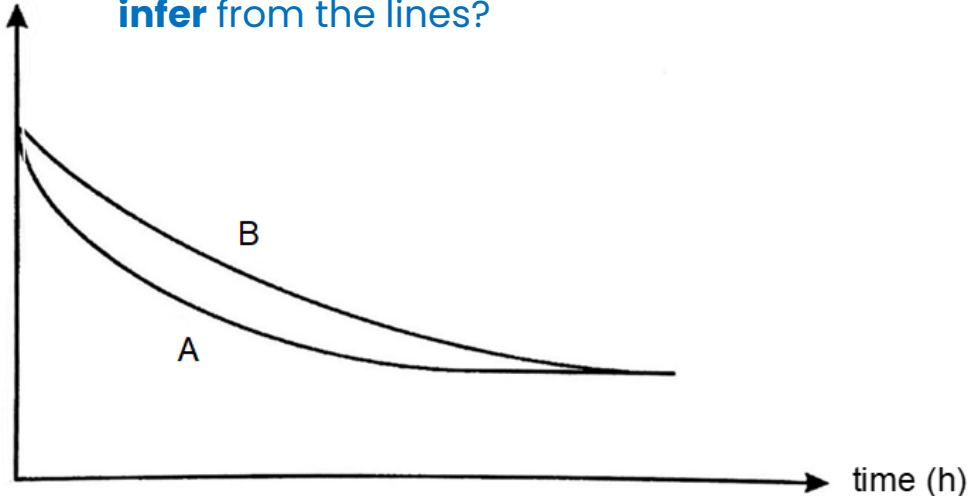
- What trend can you **observe**?
- Compare lines A and B. What can you **infer** from the lines?

Process Skills

Students need to know how to:

- (a) **Interpret information** (including pictorial, tabular and graphical)
- (b) Use one or a combination of process skills to investigate.

temperature of
liquid X ($^{\circ}\text{C}$)



A Garden where Scholars Bloom

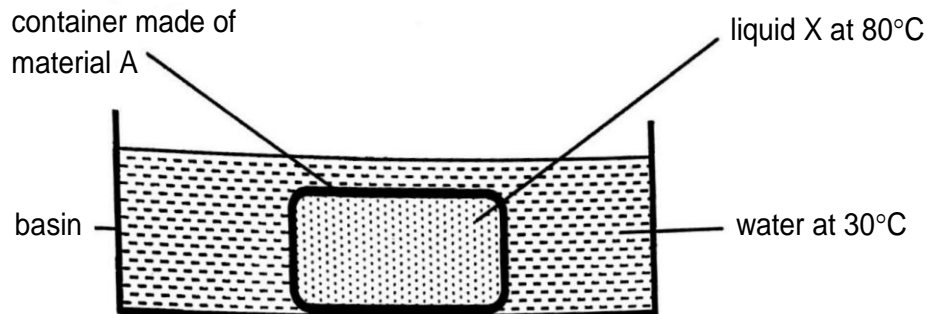


Teaching and Learning of Science

- An example of **applying Knowledge and Process Skills**

An application question would include an experimental set-up...

Janice conducted an experiment using the set-up below.



She measured the temperature of liquid X in the container over a period of time. She repeated the experiment using a container made of material B. Her results are shown in the graph below.

Application of Knowledge and Process Skills

Students need to apply scientific facts, concepts and principles to new situations.

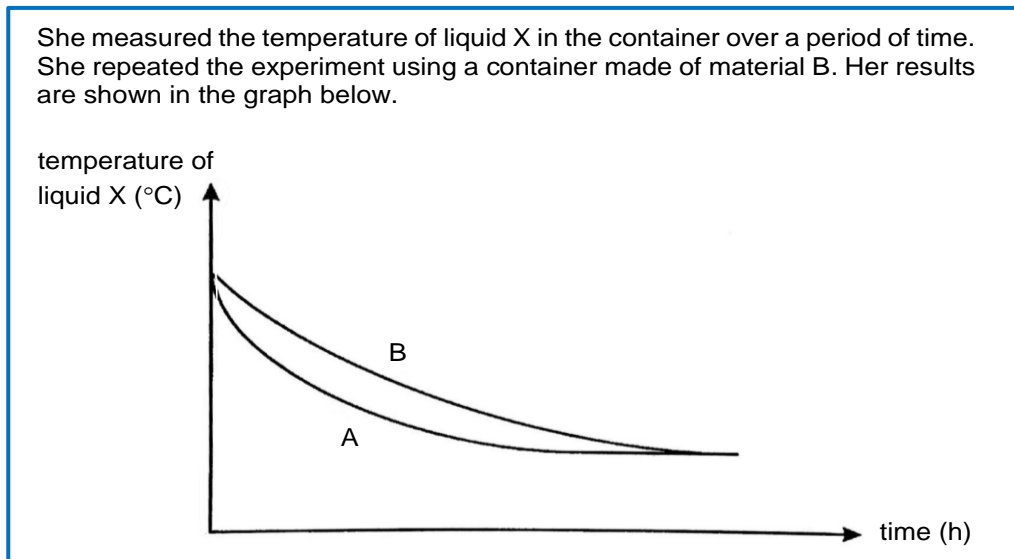
A Garden where Scholars Bloom



Teaching and Learning of Science

- An example of **applying Knowledge** and **Process Skills**

...results of the experiment would be given.



Application of Knowledge and Process Skills

Students need to apply scientific facts, concepts and principles to new situations.

A Garden where Scholars Bloom



Teaching and Learning of Science

- An example of **applying Knowledge** and **Process Skills**

Janice wanted to bring hot food and cold drinks for a school trip. She wanted to keep the food hot and the drinks cold. Which material(s) would be more suitable for the containers?

Application of Knowledge and Process Skills

Students need to **apply** scientific facts, concepts and principles to **new situations**.

A Garden where Scholars Bloom



Teaching and Learning of Science

- An example of **applying Knowledge and Process Skills**

To do this, students need to apply the knowledge of heat and infer from the graph.

One of the facts/concepts about Heat:

- What is a good conductor of heat?
- What is a poor conductor of heat?

Metals allow heat to flow through them easily. They are called good conductors of heat.

Materials like air, plastic, rubber and wood do not allow heat to flow through them easily. They are called poor conductors of heat.

2.2.4 Conductors of Heat

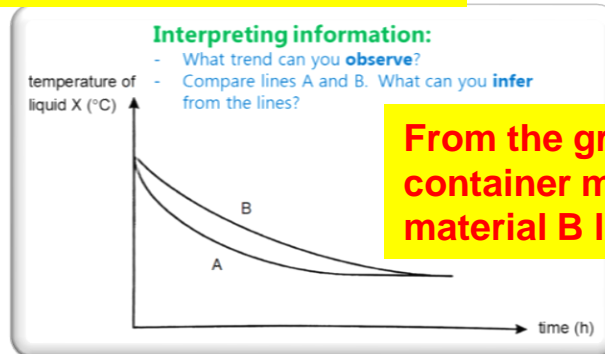
The metal body is a good conductor of heat.

The plastic handle is a poor conductor of heat.

So, material B is a poorer conductor of heat and is a more suitable material.

Application of Knowledge and Process Skills

Students need to apply scientific facts, concepts and principles to new situations.



From the graph, liquid in the container made from material B lost heat slower.

A Garden where Scholars Bloom



Teaching and Learning of Science

- **Three areas** to master:

Knowledge (Content)

Students need to know and understand:

- (a) Scientific facts, concepts and principles
- (b) Scientific terminology and conventions
- (c) Scientific instruments and apparatus

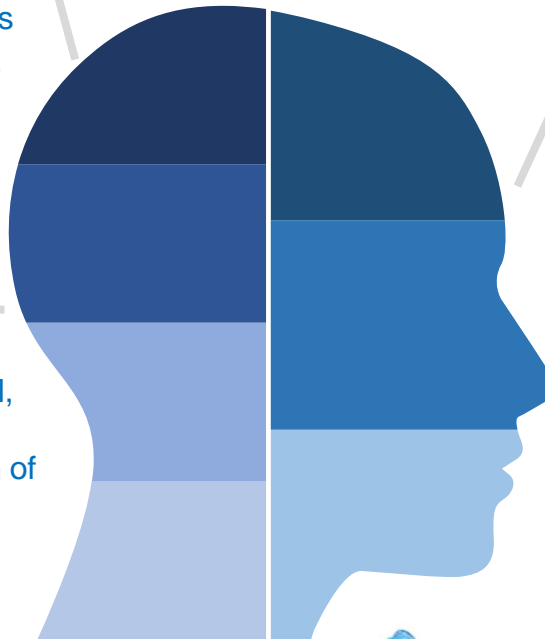
Process Skills

Students need to know how to:

- (a) Interpret information (including pictorial, tabular and graphical)
- (b) Investigate using one or a combination of process skills

Application of Knowledge and Process Skills

Students need to apply scientific facts, concepts and principles to new situations.

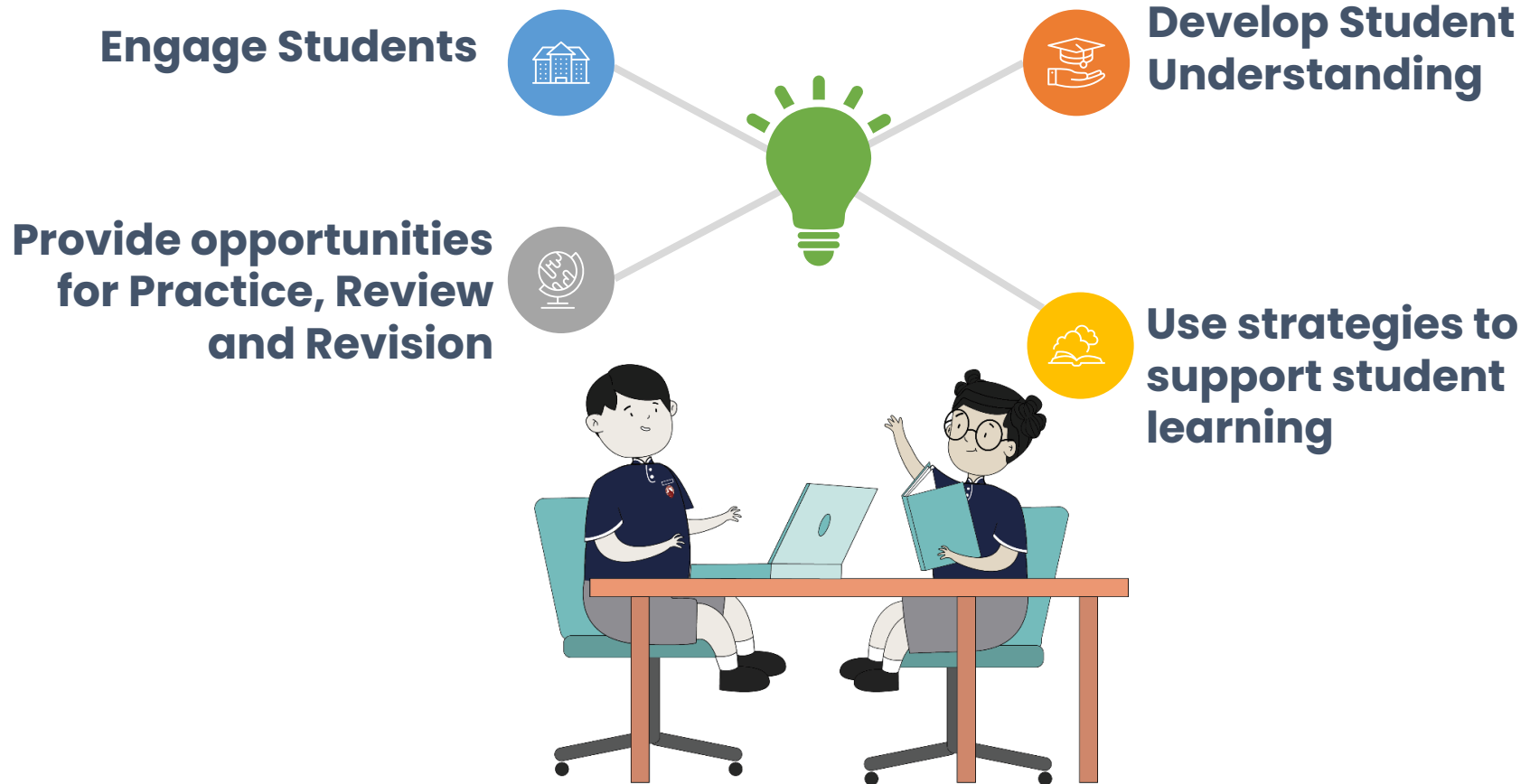


A Garden where Scholars Bloom



Student Learning Experiences

How do we provide the best learning experience for our students to master the **three areas**?





Student Learning Experiences

How do we provide the best learning experience for our students to master the **three areas**?

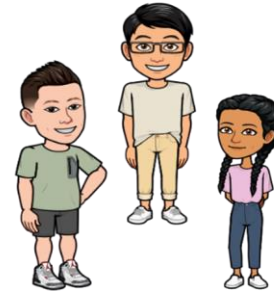
Engage Students

Use case studies/stories to **promote thinking** and **discussion**



Engagement

Alex, Borhan and Chrika met up at Admiralty Nature Park. One of their classmates told them that there were a few types of strange-looking round objects in the park. They could not wait to find out what those objects were!



What do you think those objects are?

A Garden where Scholars Bloom



Student Learning Experiences

How do we provide the best learning experience for our students to master the **three areas**?

Engage Students

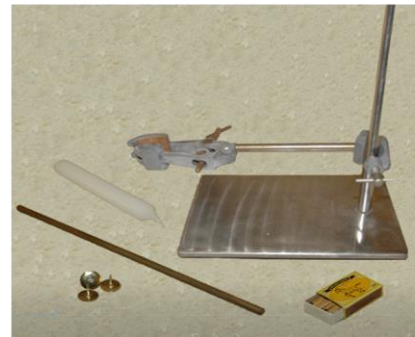
Design **tasks** that allow students to **apply knowledge** and **process skills**



Quiz Time!

Mr Tan wanted to find out how heat flows in an object. He had 3 thumbtacks, a candle, a retort stand and a box of matches.

Can you help him design the experiment? What would be the changed variable?



Engagement

A Garden where Scholars Bloom



Student Learning Experiences

How do we provide the best learning experience for our students to master the **three areas**?



Develop Student Understanding

Carry out **hands-on investigations** to explore concepts

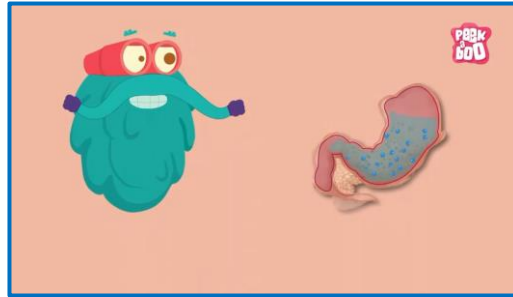
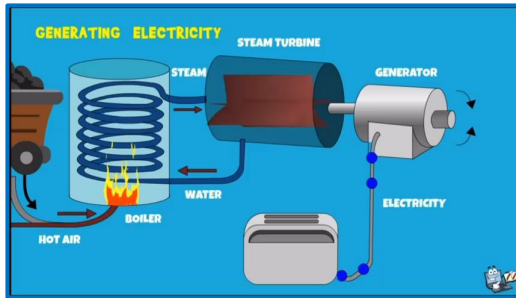
Use **questions** to deepen learning

A Garden where Scholars Bloom



Student Learning Experiences

How do we provide the best learning experience for our students to master the **three areas**?



Develop Student Understanding

Provide **clear explanation** and **address misconceptions**



A Garden where Scholars Bloom



Student Learning Experiences

How do we provide the best learning experience for our students to master the **three areas**?



Quiz Time!

Ahmad stores his cold drinks in a cooler box as shown.



How does the cooler box help keep the cold drinks cold for the longest time?

Extension



Develop Student Understanding

Provide opportunities for students to **apply knowledge to authentic settings to deepen learning**

A Garden where Scholars Bloom



Student Learning Experiences

How do we provide the best learning experience for our students to master the **three areas**?

Provide opportunities for Practice, Review and Revision

Provide wrap-up and sense-making opportunities in addition to workbook

Highlight technical vocabulary and phrases.



MCQ Companion

SI LING PRIMARY SCHOOL
MCQ Companion
Primary 5 Science
TOPIC: Reproduction in Plants and Humans

Name: _____ Date: _____
Class: 5 _____

For each question from 1 to 15, four options are given. One of them is the correct answer. Make your choice (1, 2, 3 or 4). Write the correct answer in the bracket given.

1. Ann wanted to find out if a fruit would develop when a certain part of a flower was removed. Three similar flowers P, Q and R with different parts removed are shown in the diagrams below.

Flower P

Flower Q

Flower R

Ann put pollen grains from the same species of flowers on the three flowers.
Which flowers would most likely develop into a fruit?

(1) P and Q only
(2) Q and R only
(3) P and R only
(4) P, Q and R

Science Process Skills

SI Ling Primary School
Science Process Skills
Primary Five
TOPIC: Reproduction in Plants and Humans

Name: _____ Date: _____
Class: _____

1. John went on a field trip to collect some fruits and seeds samples of three different plants, A, B and C. He made a record of the locations where he found the samples in the map below.

Observe the seed shown in the diagram below.

A Garden where Scholars Bloom



Student Learning Experiences

How do we provide the best learning experience for our students to master the **three areas**?

**Provide opportunities
for Practice, Review
and Revision**

**Monitor student
understanding**



Concept Mastery

Si Ling Primary School
Concept Mastery 2
Primary Five Science
TOPIC: Reproduction in Plants and Humans

Name : _____ ()

Class : 5 ()

Date : _____

Parent's Signature: _____

12

For each question from 1 to 3, four options are given. One of them is the correct answer. Make your choice (1, 2, 3 or 4). Write the correct answer in the bracket given. (6 marks)

1. The diagram shows two flowers.

Pollination takes place when pollen grains are transferred from _____.

(1) A to B
(2) C to D
(3) C to E
(4) none of the above

()

A Garden where Scholars Bloom



Student Learning Experiences

How do we provide the best learning experience for our students to master the **three areas**?

Provide opportunities for Practice, Review and Revision

Provide **extra support** for identified students.



- ▶ **Excellence 2000 (E2K)** to cater to selected students – students engaging in scientific investigations to discover and deepen their understanding of advanced science concepts through an inquiry approach
- ▶ Enrichment classes to practise **questions that focus on data interpretation**; uncovering and explaining data trend

A Garden where Scholars Bloom



Student Learning Experiences

How do we provide the best learning experience for our students to master the **three areas**?

**Provide opportunities
for Practice, Review
and Revision**



Provide **extra support** for
identified students.

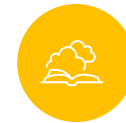
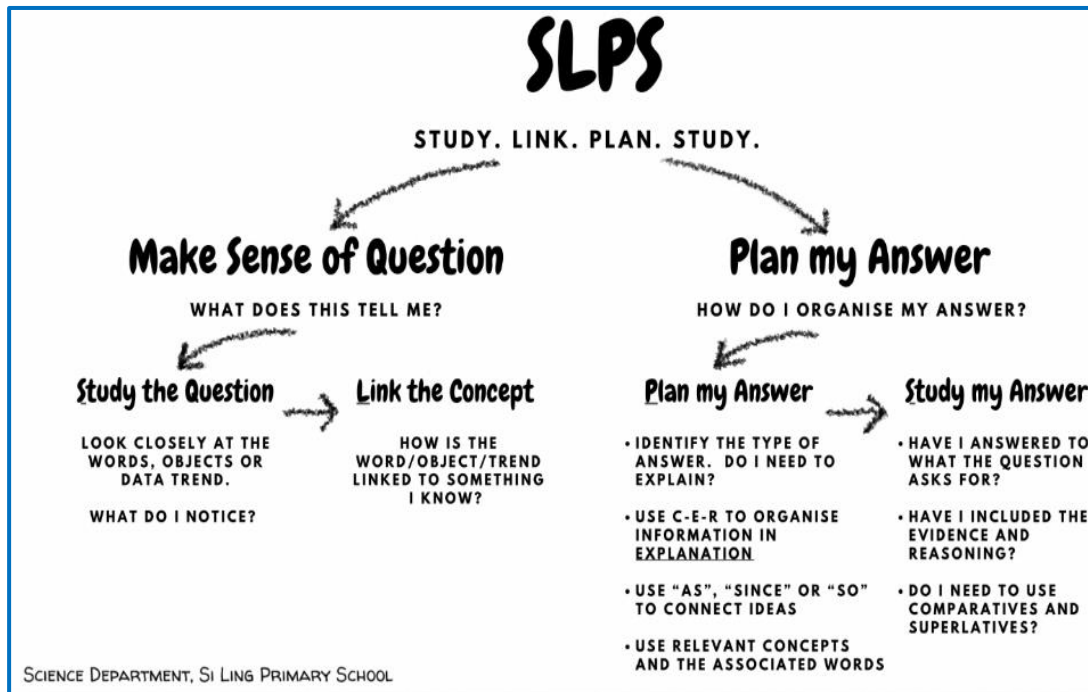
- ▶ Remediation classes – to revise and practise, bridging identified learning gaps

A Garden where Scholars Bloom



Student Learning Experiences

How do we provide the best learning experience for our students to master the **three areas**?



Use strategies to support student learning

Use **SLPS** strategy to guide students ace in **answering open-ended questions**

A Garden where Scholars Bloom



Student Learning Experiences

How do we provide the best learning experience for our students to master the **three areas**?

CER
CLAIM. EVIDENCE. REASONING.

Explanation
EXPLAIN WHY, GIVE A REASON WHY

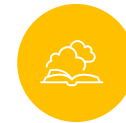
Claim + **Evidence** + **Reasoning**

WHAT IS MY ANSWER?
WHAT OBSERVATION WAS MADE?

WHAT DO I SEE OR KNOW
THAT MAKES ME STATE
THE CLAIM?

WHICH CONCEPT TELLS
ME THAT THE EVIDENCE
MAKES THE CLAIM
CORRECT?

SCIENCE DEPARTMENT, SI LING PRIMARY SCHOOL



Use strategies to support student learning

Use CER strategy to guide students construct science explanations

Your teacher will show you two leaves, A and B. The leaves were taken from a plant exposed to sunlight for two days. The tip of leaf B has been cut off for identification.

C: Leaf B
B: Leaf B is exposed to sunlight as it is not covered with black paper.
A: Leaf B is able to photosynthesize and produce sugar which is stored as starch.

leaf B - is exposed to sunlight -> can photosynthesize
leaf A (covered with black paper) -> blocks light -> cannot photosynthesize

(green) stored sugar

Predict which leaf contains starch. Explain your answer.

Claim
[Leaf B] is leaf B is exposed to sunlight and is not covered with a black paper, unlike A which is covered with a black paper which blocks light.

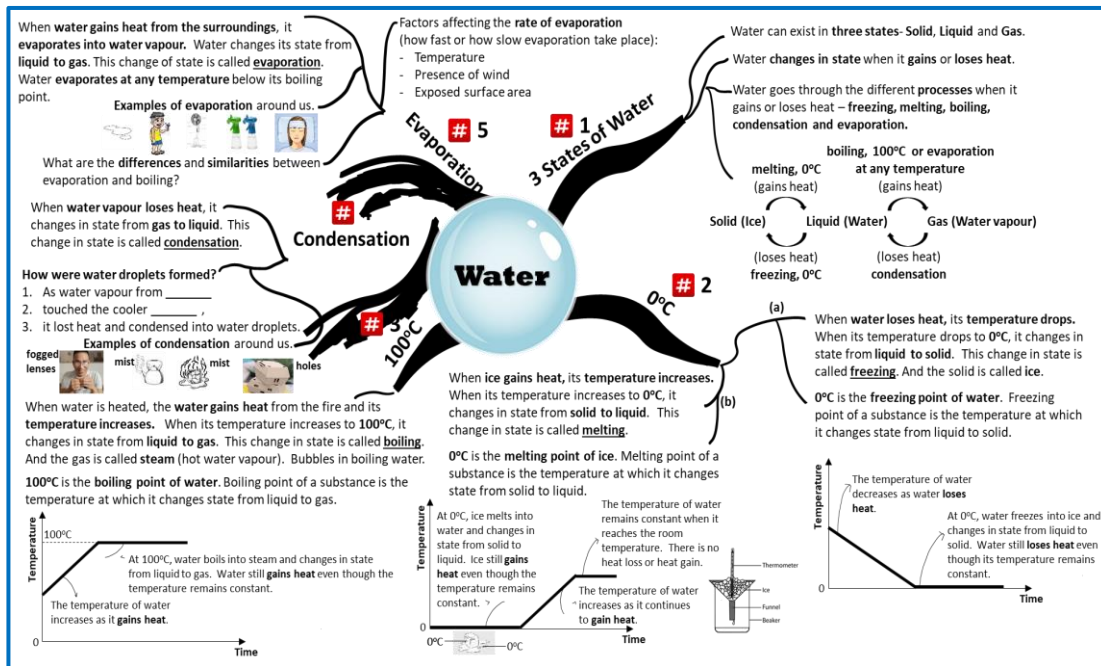
Evidence
[So] Leaf B is able to photosynthesize and produce sugar which is stored as starch. Thus, leaf B contains starch.

A Garden where Scholars Bloom



Student Learning Experiences

How do we provide the best learning experience for our students to master the **three areas**?



Use strategies to support student learning

Develop **#Concepts** to help students **retrieve concepts**

A Garden where Scholars Bloom



Supporting Children's Learning

Why do you get yourself involved in your child's learning in Science?

- Help child **strengthen science concepts**
- **Reinforce** and **extend** what child is learning in school
- **Motivate child to feel confident** about himself or herself as learners

How do you support your child in learning Science?

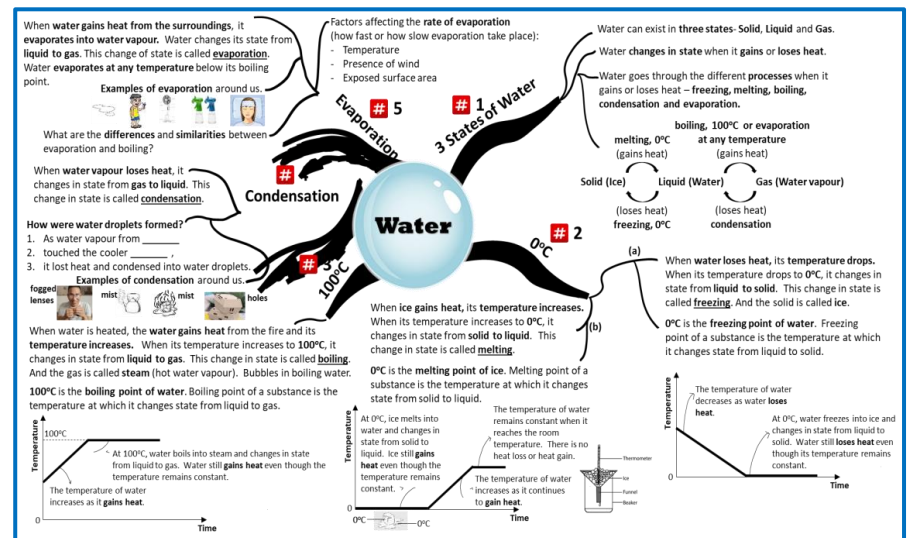
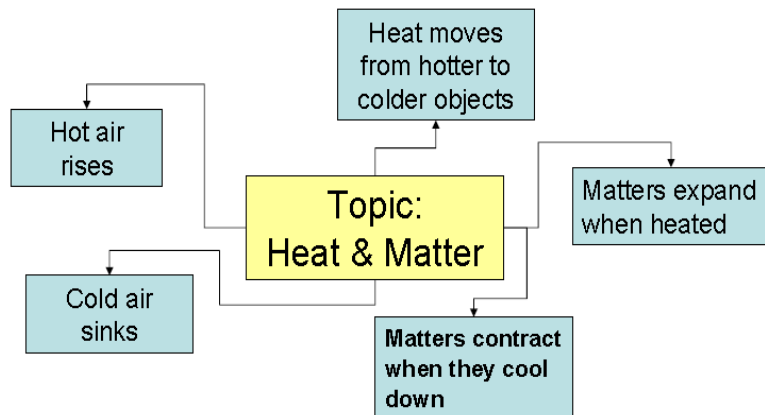
A decorative border at the bottom of the slide features a lush green lawn with several white daisies and small blue flowers. Numerous colorful butterflies, including orange and black monarchs and blue and yellow ones, are scattered across the scene, some appearing to fly.

A Garden where Scholars Bloom



Supporting Children's Learning

- Guide your child to **master the science concept**
 - Encourage child to **read frequently**, know the facts
 - Ensure child is very familiar with the **concepts in #Concepts (Primary 3 and Primary 4)**



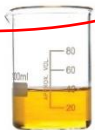
A Garden where Scholars Bloom

Supporting Children's Learning

- Guide your child to **master the science concept**
 - Use **questions** or **words in textbooks** to ask your child

Liquid Questions to ask:

What are the properties of a liquid?



► What do you observe about the shape and volume of the liquid in both containers?

The liquid takes the shape of the container it is in. The volume of the liquid remains the same even if it is poured into another container.

Both containers have 40 ml of liquid. The liquids have the same volume.



A liquid has a **definite volume** but **no definite shape**.

Expected response from child

What happens when the liquid in a syringe is pressed by pushing in the plunger?

The plunger cannot be pushed in at all. The volume of the liquid does not change. A liquid cannot be compressed.

Why does a liquid spread all over the floor when you spill it?



Words that child can use to create graphic organiser

matter
mass
volume
occupies space

states
solid
liquid
gas

definite shape
definite volume
compressed

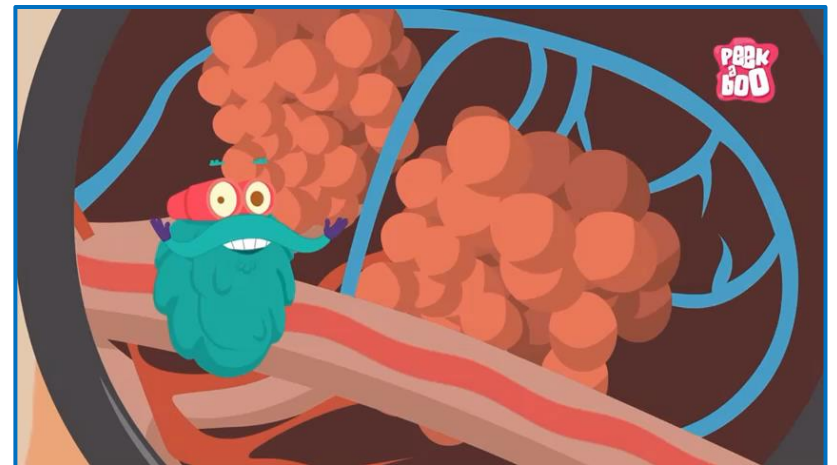
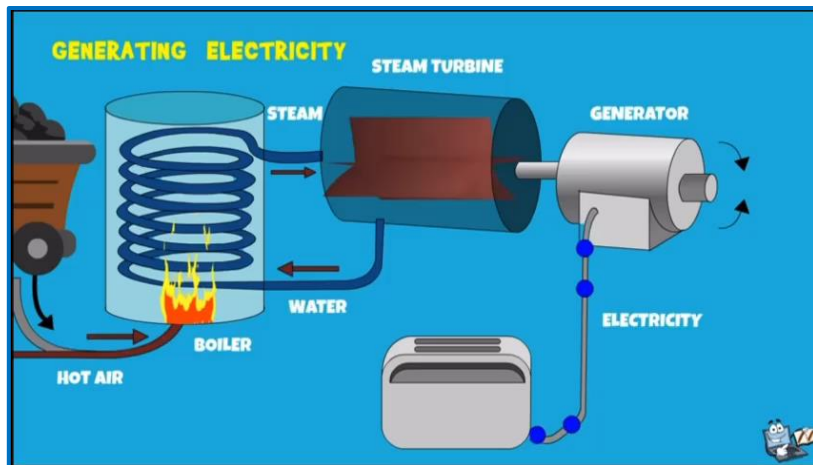
all mapped out





Supporting Children's Learning

- Guide your child to **master the science concept**
 - Use role-play or watch animations to understand abstract topics (e.g. Youtube, SLS).



A Garden where Scholars Bloom



Supporting Children's Learning

- Guide your child to **apply** what he/she has learnt to **different situations**



For example:

You can ask how the hand-dryer removes water from his hands.

Your child needs to recall the concept of rate of evaporation to tell you how.

A Garden where Scholars Bloom



Supporting Children's Learning

- Guide your child during **revision**
 - Go through the **corrected responses** in assignments with child
 - Remind them to use **relevant science concepts** in their responses
 - Ask child to **interpret information** in diagrams, graphs, tables
 - Remind child to use the **strategies (SLPS and CER)** they have learnt in answering Multiple-Choice Questions and Open-ended Questions

A Garden where Scholars Bloom



Supporting Children's Learning

- Guide your child during **revision**
 - Use Practice Papers to **conduct timed-practice** with child to practise time management

Format of Paper (Standard)					
Booklet	Duration	Item Type	No. of questions	Marks per question	Marks
A	1h 45mins	Multiple-choice	28	2	56
B		Open-ended	12 – 13	2 – 5	44

A Garden where Scholars Bloom



Supporting Children's Learning

- Guide your child during **revision**
 - Focus on:
 - (i) Knowing the science concepts very well for easy retrieval
 - (ii) Processing information and evaluating the distractors in MCQ
 - (iii) Constructing science explanations for Booklet B

A decorative border at the bottom of the slide features a lush green lawn with several white daisies and small blue flowers. Numerous colorful butterflies, including orange, yellow, and blue ones, are scattered across the scene, some appearing to fly.

A Garden where Scholars Bloom



Supporting Children's Learning

- Ensure your child is prepared for lessons and examinations
 - Ensure they attend class regularly and punctually
 - Refer to assessment dates closely and plan timely revision
 - Ensure they sit for all assessments (Weighted Assessments and End-of-Year Examination) unless there is a valid reason
 - Check their belongings before they leave home. Make sure they have everything they will need (stationery)
 - Encourage them to eat healthily and have ample rest to avoid falling sick

A Garden where Scholars Bloom



Excellence in Science

Knowledge (Content)

Students need to know and understand:

- (a) Scientific facts, concepts and principles
- (b) Scientific terminology and conventions
- (c) Scientific instruments and apparatus

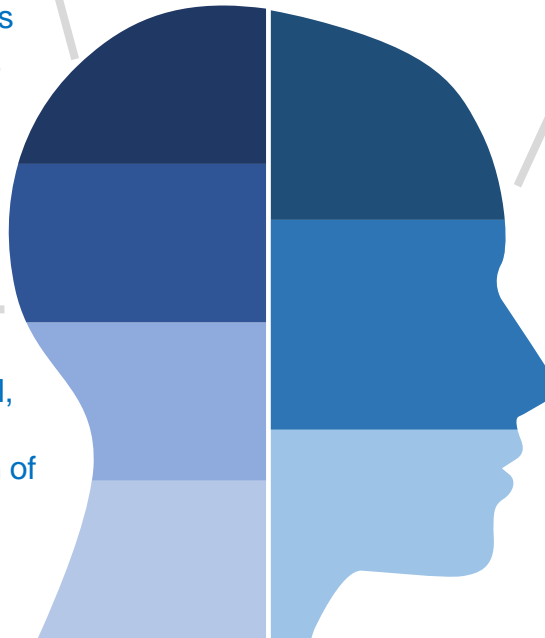
Process Skills

Students need to know how to:

- (a) Interpret information (including pictorial, tabular and graphical)
- (b) Investigate using one or a combination of process skills

Application of Knowledge and Process Skills

Students need to apply scientific facts, concepts and principles to new situations.



A Garden where Scholars Bloom



Supporting Children's Learning

Summary:

Guide your child:

- To master the science concept
- To apply what he/she has learnt to different situations
- During revision
- To be prepared for lessons and assessments

A decorative border at the bottom of the slide features a lush green field with various white and yellow daisies. Several colorful butterflies, including orange, yellow, and blue ones, are scattered across the scene, appearing to fly over the grass.

A Garden where Scholars Bloom



<https://go.gov.sg/p4parent2023>

A Garden where Scholars Bloom



Thank You

A Garden where Scholars Bloom